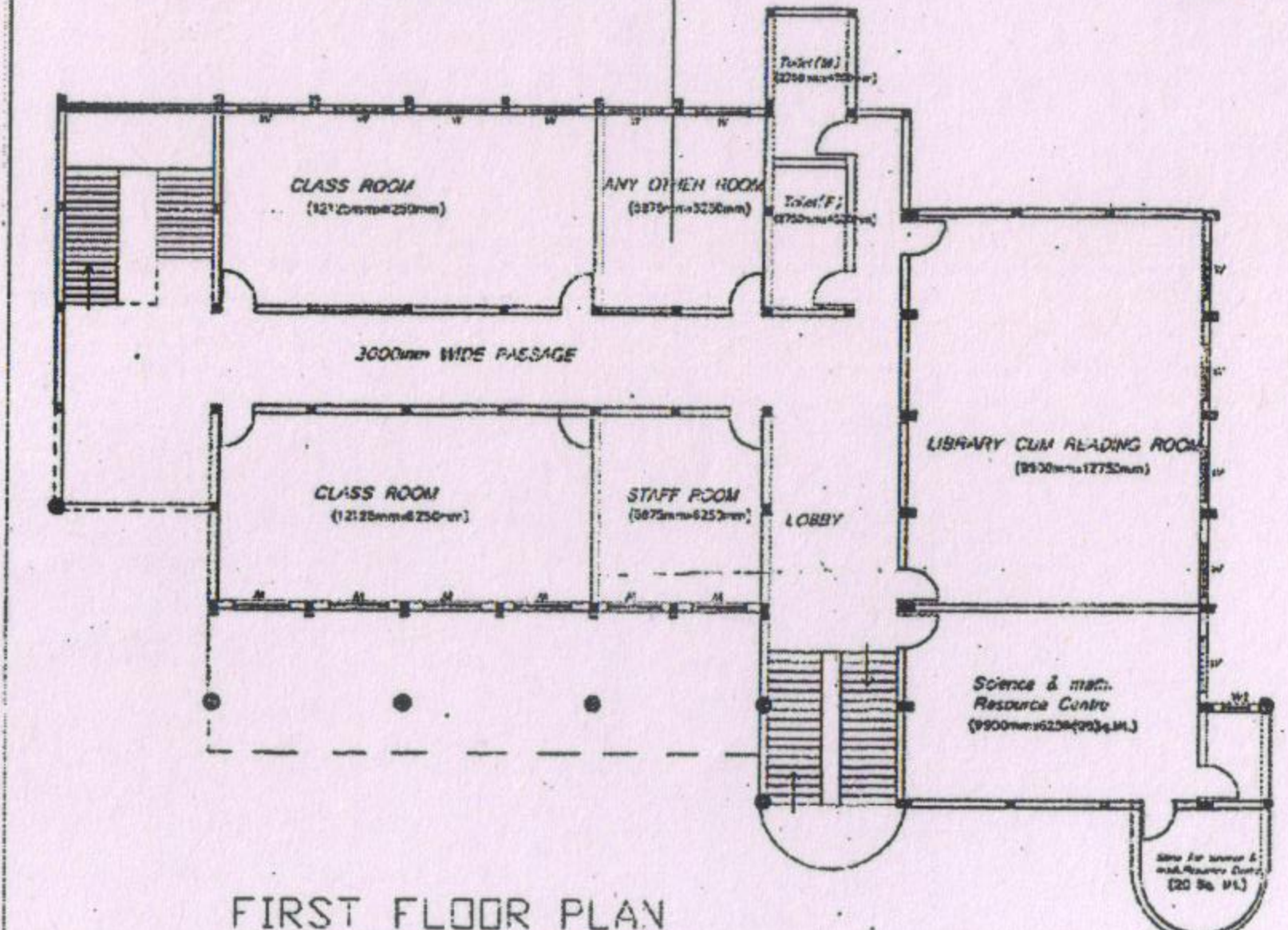
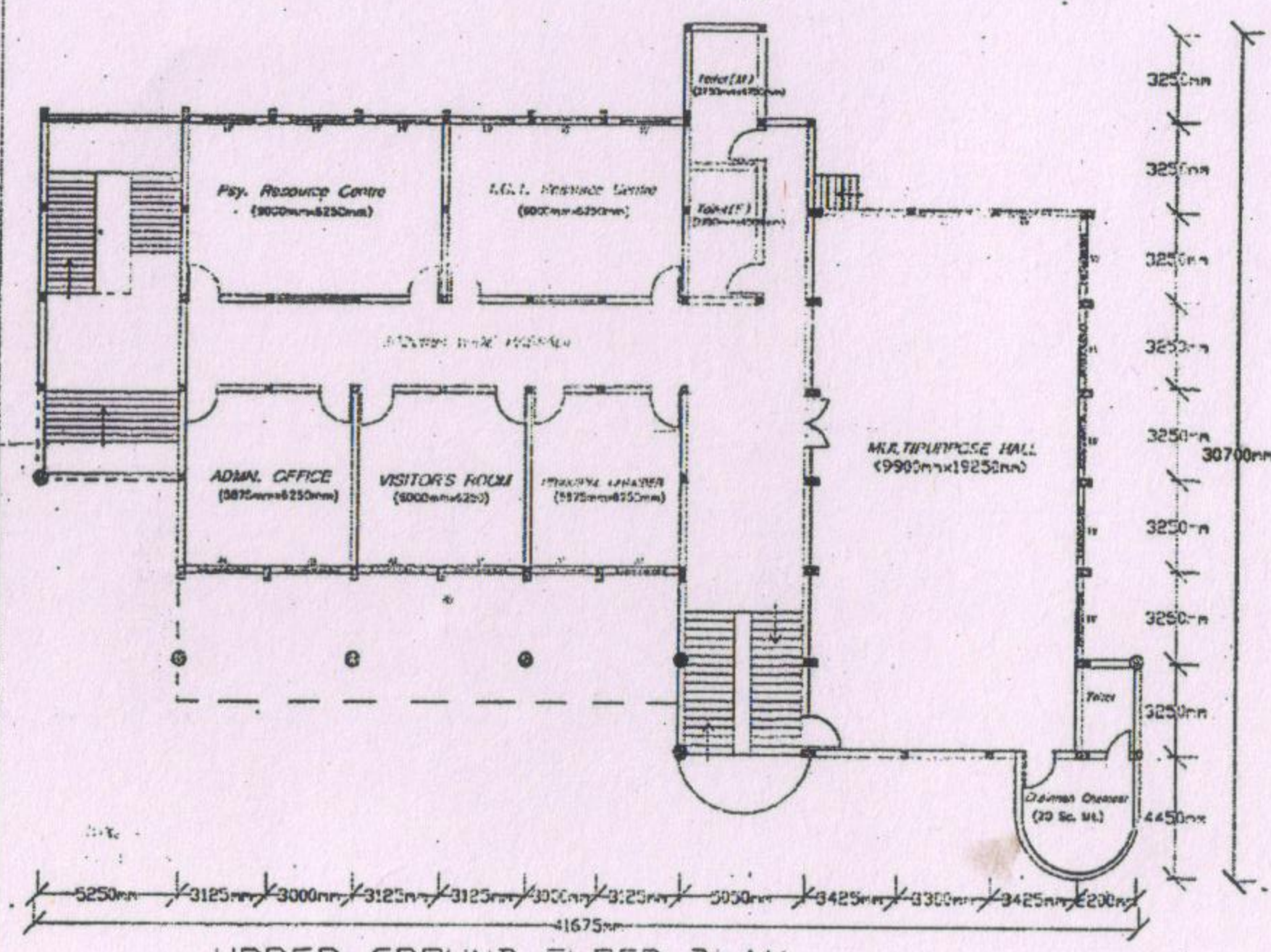


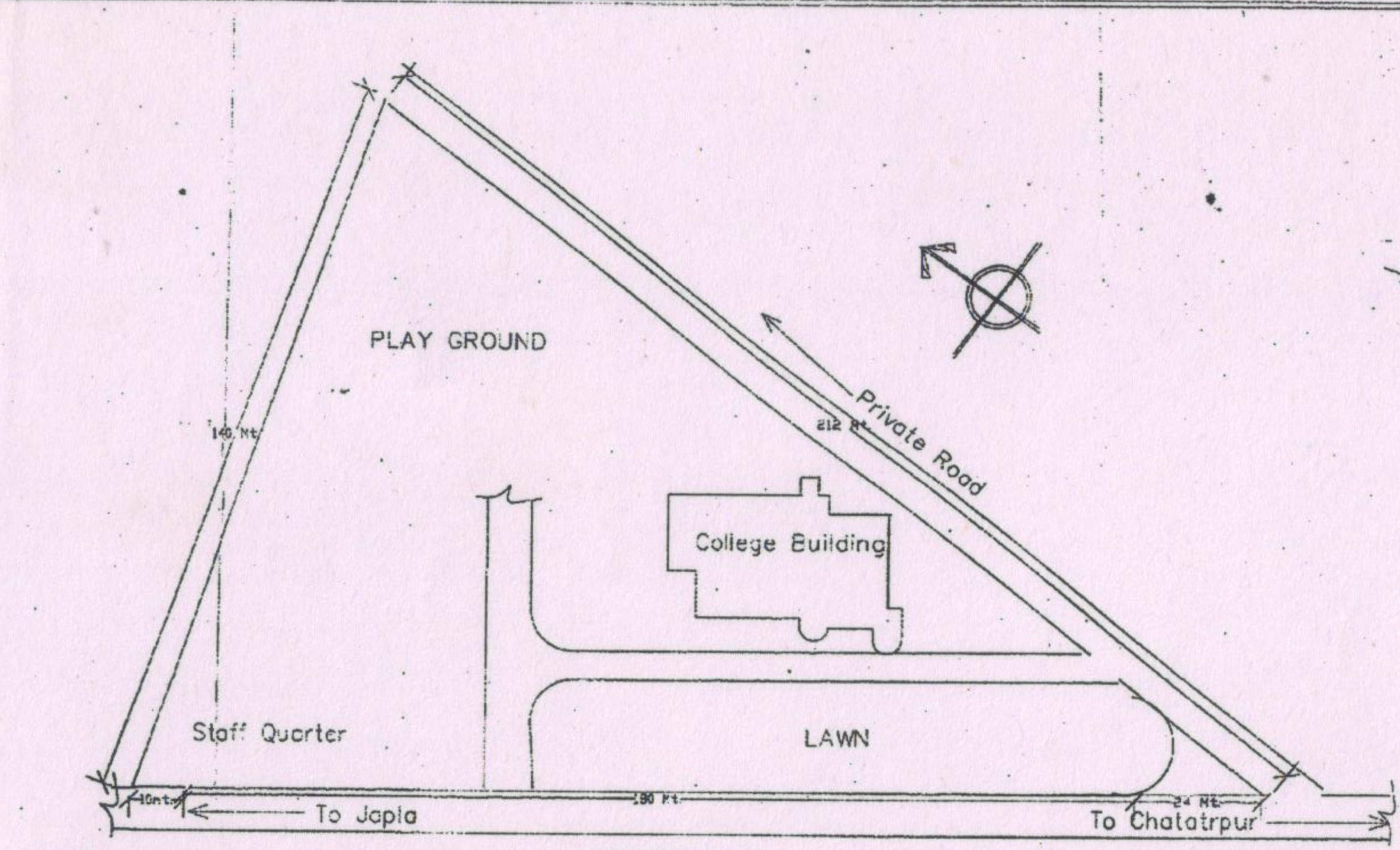
SECOND FLOOR PLAN



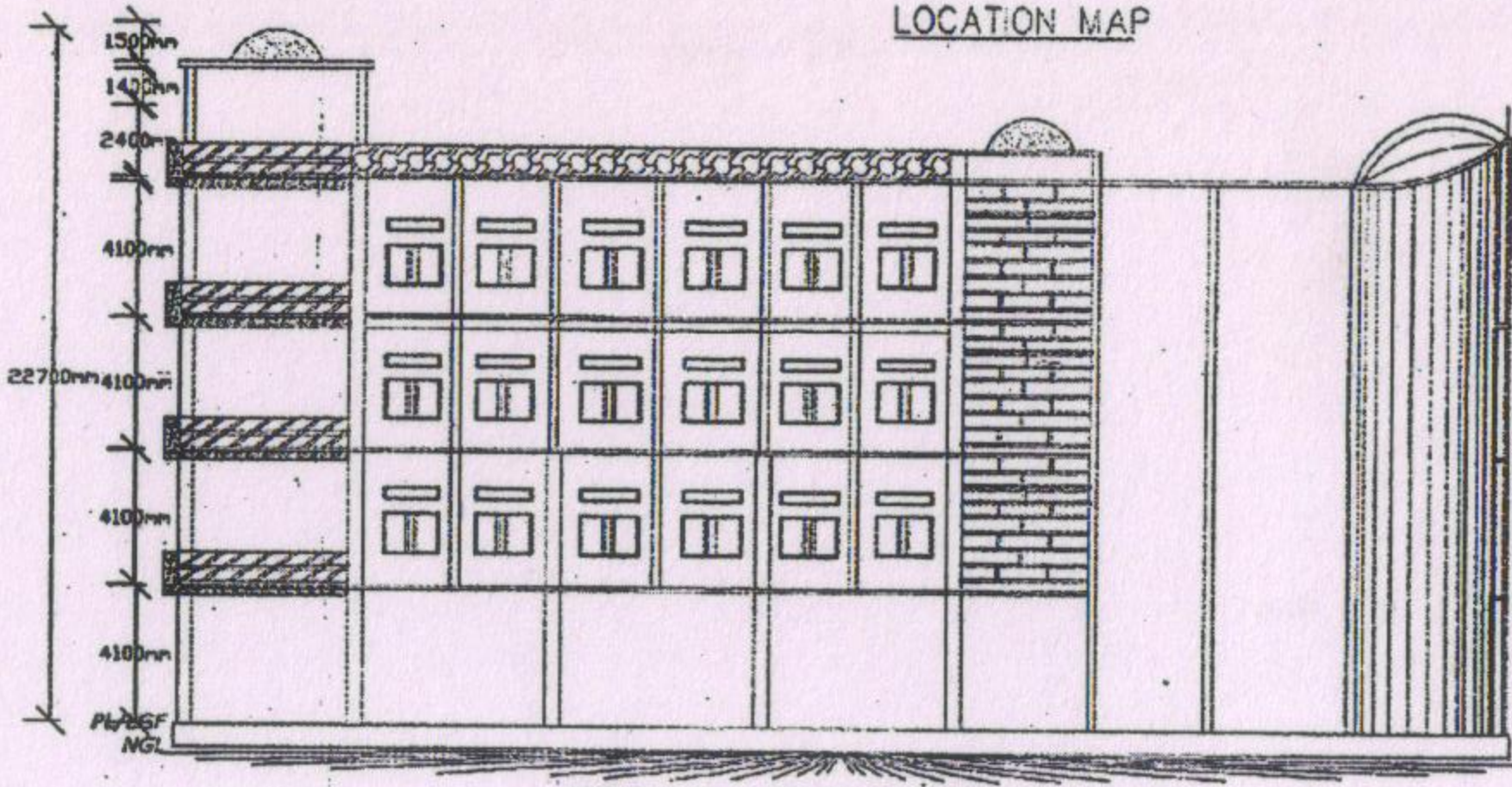
FIRST FLOOR PLAN



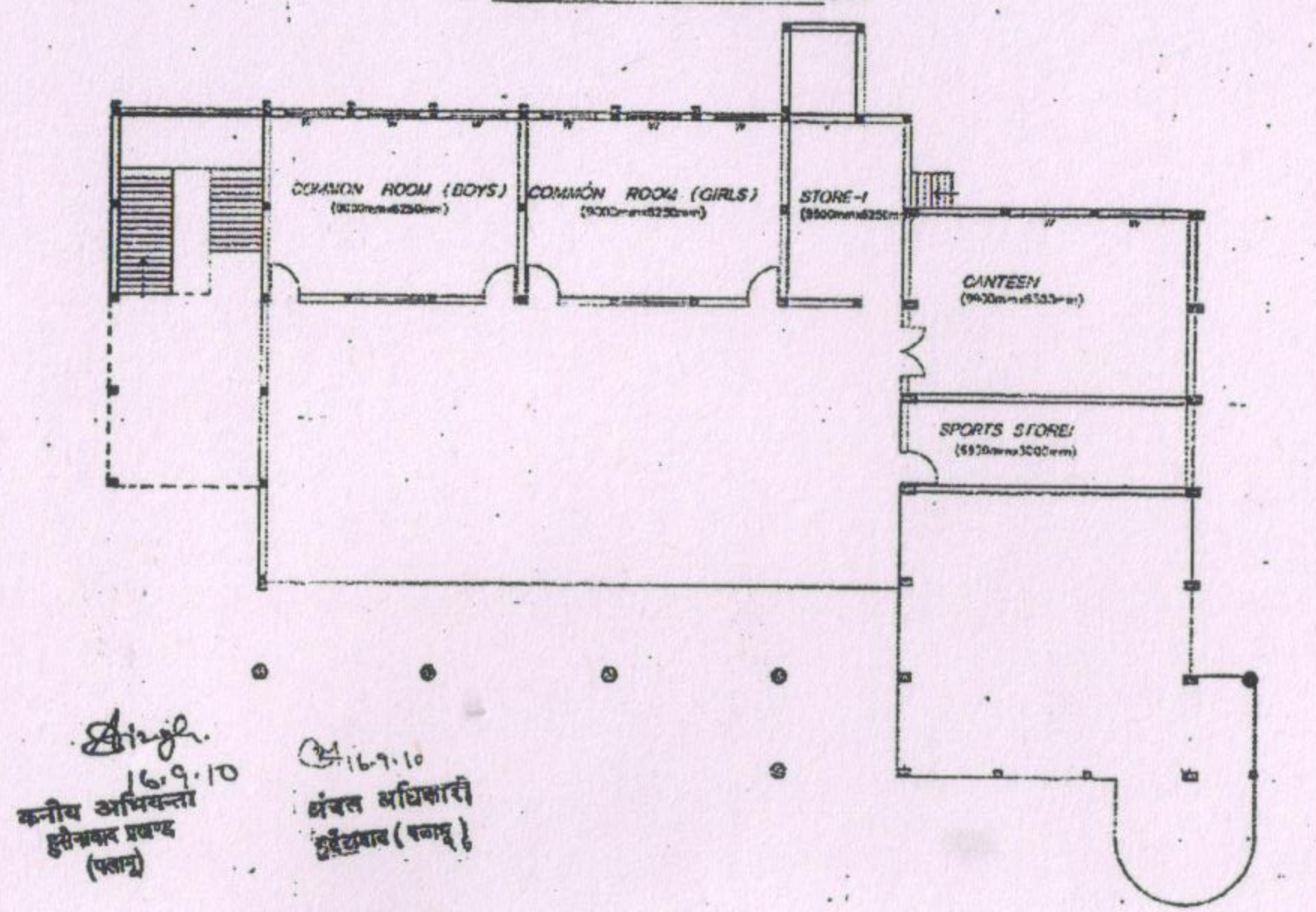
UPPER GROUND FLOOR PLAN



LOCATION MAP



FRONT ELEVATION



LOWER GROUND FLOOR PLAN

SCHEDULE OF DOORS & WINDOWS

NO.	TYPE	WIDTH	HEIGHT	NO. OF LEVELS
1.	BI	1200mm	2100mm	0
2.	B2	1050mm	2100mm	0
3.	B3	750mm	2100mm	0
4.	COLLAPSIBLE GATE	3050mm	1050mm	1050mm
5.	V1	1835mm	1050mm	1050mm
6.	V2	1500mm	1050mm	1050mm
7.	V3	1050mm	2400mm	0
8.	V4	750mm	600mm	2500mm

Specification of Rooms and other infrastructural facilities

Description	Length in meter	Breadth in meter	Area in Sq. Meter
1. Class Room	1212	6.25	75.18
2. Class Room	1212	6.25	75.18
3. Multi Purpose Hall	9.90	19.25	190.58
4. Library cum Reading Room	9.90	12.73	126.83
5. Resource Room	9.90	6.25	62.25
6. I.C.T. Resource Centre	9.90	6.25	62.25
7. Health & Physical Edu. Resource Centre	9.90	6.25	62.25
8. Arts & Craft Resource Centre	9.90	6.25	62.25
9. Health & Physical Edu. Resource Centre	9.90	6.25	62.25
10. Principal Office	5.78	6.25	36.27
11. Staff Room	5.78	6.25	36.27
12. Administrative Office	5.78	6.25	36.27
13. Visitor's Room	6.00	6.71	40.26
14. Girls Common Room	9.00	6.25	56.25
15. Boys Common Room	9.00	6.25	56.25
16. Canteen	9.90	6.25	62.25
17. Store I	9.00	6.50	58.50
18. Store II	3.50	6.25	21.88
19. Toilets	9.90	3.00	29.70
20. Hall & rest	2.75	4.75	13.13
21. Fire-fight. nos.	2.75	4.50	12.38
22. Any Other Room	5.88	6.25	36.77
23. Chairman's Chamber	5.88	6.25	36.77

TOTAL AREA : 8093.02 Sq. Mts. (87965 Sq. Ft.)

Category	Area
BUILT UP AREA	
A. LOWER GROUND FLOOR	326.30 Sq. Mts.
B. UPPER GROUND FLOOR	728.46 Sq. Mts.
C. FIRST FLOOR	728.54 Sq. Mts.
D. SECOND FLOOR	481.17 Sq. Mts.
Total	2264.47 Sq. Mts.
PLINTH AREA	756.22 Sq. Mts.
CARPET AREA	1276.95 Sq. Mts.

LOWER UPPER GROUND FLOOR, FIRST FLOOR & SECOND FLOOR PLAN, ELEVATION & LOCATION MAP

PROPOSED SIDHNATH B. Ed. COLLEGE BUILDING
 VIII - SANDHA, THANA No. 475, P.O.-JAPLA, P.S. -HUSSAINABAD (PALAMAU)
 KHATA No. 53, PLOT No. 93, AREA 2 ACRE-00 Dec.

Drawing No. Sheet No.
 Detail By Drawn By

Handwritten notes in Hindi: 'कनीय अधिकाता हीनकर प्रकथ (पत्र)' and '16.9.10 संवल अधिकारी प्रो.एम. (पत्र)'